

	Continuous Footing W/ Reinforcement	172.8 FT
	(36" SQ x 18" D) Isolated Footing w/ Reinforcement	12.0
	(4" Thick) Concrete Slab w/ Reinforcement #4 Bars Each W/	1,972.1 SQ FT
	(4" Thick) Concrete Slab w/ Reinforcement #4 Bars Each ...	146.4 SQ FT
	2x Sill Plate	186.1 FT

FOUNDATION PLAN

SCALE: 1/4" = 1'-0"

MARK	SIZE	QUAN.	DESCRIPTION
①	3'-0" X 7'-0"	1	EXT., FULL GLASS
②	PR. 3'-0" X 7'-0"	1	EXT., FULL GLASS
③	3'-0" X 7'-0"	5	INT. WOOD
④	3'-0" X 7'-0"	2	CASED OPENING
⑤	2'-6" X 7'-0"	3	INT. WOOD
⑥	PR. 2'-6" X 7'-0"	2	INT. WOOD, BI-FOLD
⑦	2'-6" X 7'-0"	2	INT. WOOD, POCKET

MARK	ROUGH OPENING SIZE	QUAN.	DESCRIPTION
◇	72" X 60"	4	DOUBLE, DOUBLE-HUNG
◇	36" X 42"	1	SINGLE, DOUBLE-HUNG
◇	36" X 60"	4	SINGLE, DOUBLE-HUNG

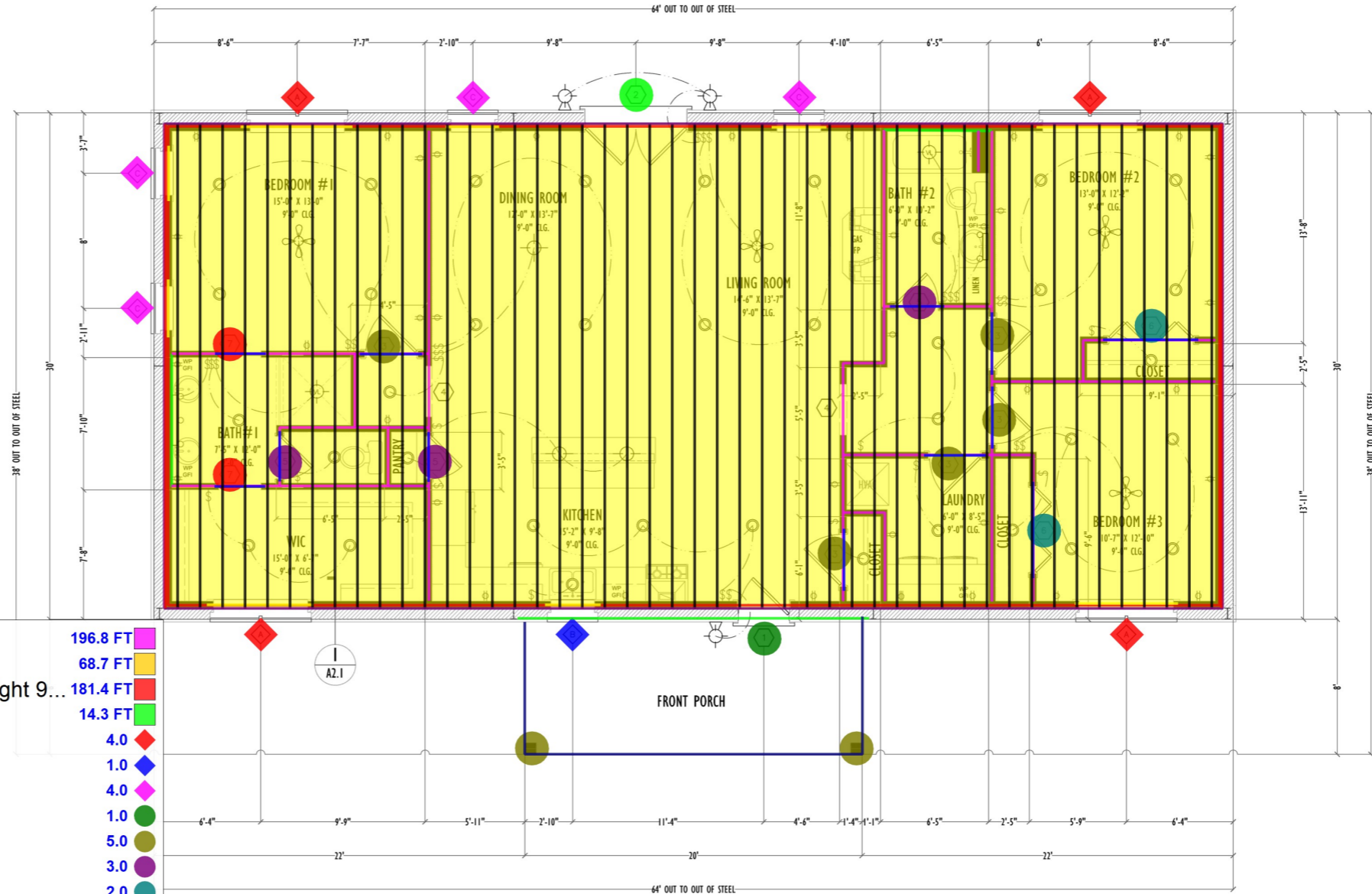
NOTE: ALL WINDOW HEADERS ARE AT 7'-0" ABOVE F.F.E UNLESS NOTED

ELECTRICAL NOTES:

- THESE DRAWINGS ARE INTENDED TO REPRESENT DESIGN AND LIGHTING INTENT ONLY. COMPLIANCE WITH CODE REQUIREMENTS ARE CONTRACTOR'S RESPONSIBILITY.
- SMOKE DETECTOR'S TO BE 110V RUN OFF LIGHTING CIRCUIT & INTER-CONNECTED. DETECTORS TO BE WITHIN 15' OF EACH BEDROOM WITH BATTERY BACKUP.
- FIELD VERIFY FINAL LOCATION OF OUTLETS, OUTLETS WITH PORTS & FIXTURES W/BUILDER PRIOR TO ROUGH-IN.
- ELECTRICIAN TO COMPLY WITH ALL APPLICABLE CODES. ELECTRICIAN TO DESIGN AND INSTALL ALL SUPPLY, PANEL AND DISTRIBUTION SYSTEMS.

ELECTRICAL FIXTURE LEGEND	
⊕	110V WALL PLUG
⊕	220V WALL PLUG
⊕ GFI	110V OUTLET GROUND FAULT
⊕ GFI WP	WATERPROOF GROUND FAULT 110 OUTLET
⊕	SWITCH
⊕	SURFACE MOUNTED LIGHT

- (2x4) Interior Wall (Ceiling Height 9'-0")
- MRB
- (2x4) Exterior Wall (Exterior Height 11'-0") (Interior Ceiling Height 9'-0")
- MRB
- 72"x60" Double-Hung Window
- 36"x42" Single-Hung Window
- 36"x60" Single-Hung Window
- 3'-0"x7'-0" Full Glass Door w/ Frame
- 3'-0"x7'-0" Wood Door w/ Frame
- 2'-6"x7'-0" Wood Door w/ Frame
- 2'-6"x7'-0" Wood BI-Fold Door w/ Frame
- 2'-6"x7'-0" Wood Door w/ Frame
- 3'-0"x7'-0" Full Glass Door w/ Frame
- 2x Window Header
- 2x Door Header
- 2x Ceiling Joist
- Standard Joist
- 2x Rim-Joist
- 2x4 Gable Exterior Wall (5'-3" H)
- 2x4 Gable Exterior Wall (2'-9" H)
- 8x8x9' Cypress Post
- LVL Beam



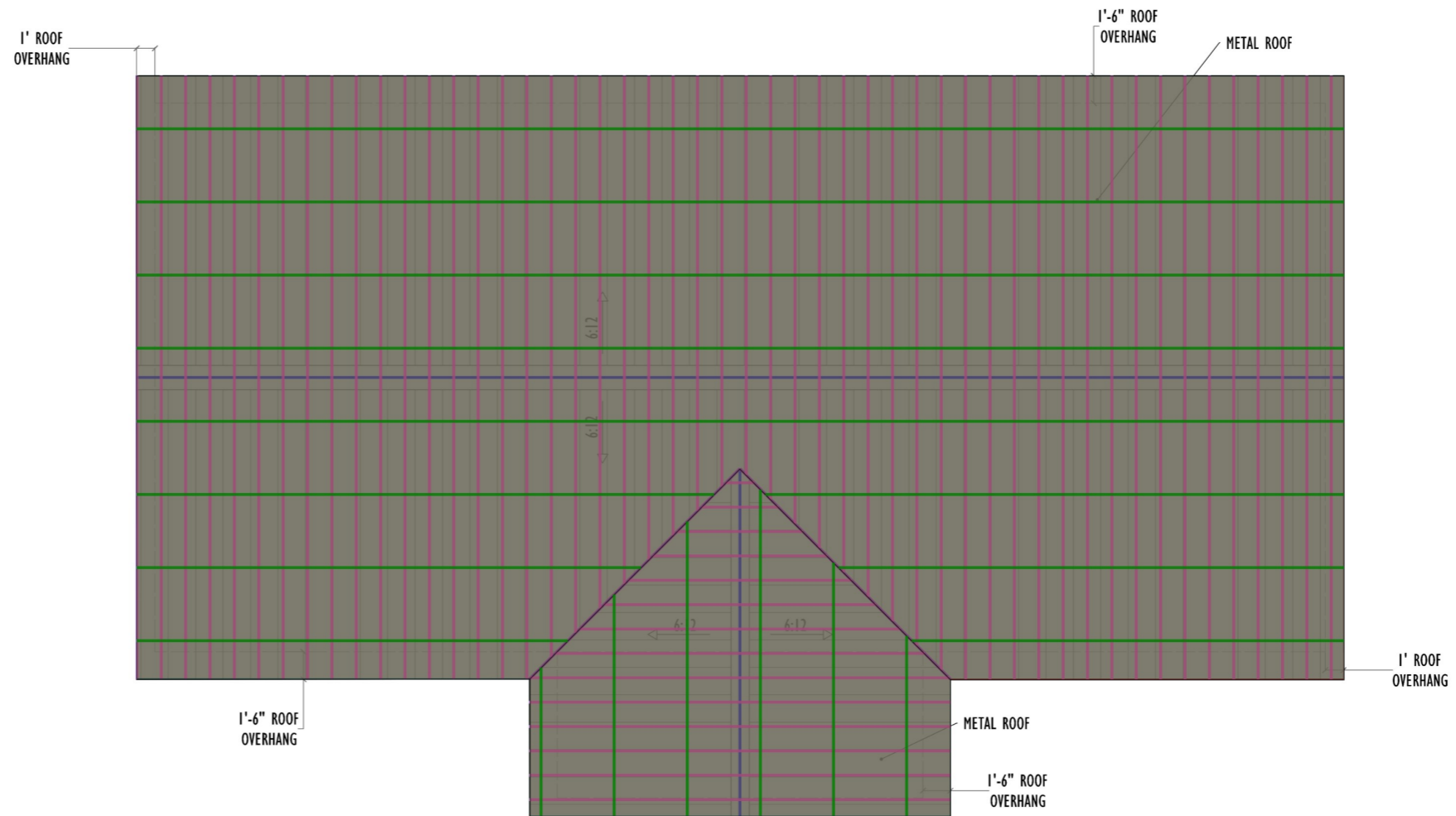
- 196.8 FT
- 68.7 FT
- 181.4 FT
- 14.3 FT
- 4.0
- 1.0
- 4.0
- 1.0
- 5.0
- 3.0
- 2.0
- 2.0
- 1.0
- 48.0 FT
- 50.0 FT
- 1,803.7 SQ FT
- 1,350.8 FT
- 183.0 FT
- 57.4 FT
- 20.9 FT
- 2.0
- 36.0 FT

FLOOR PLAN
SCALE: 1/4" = 1'-0"

MAIN FLOOR PLAN








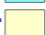

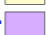




Project ID: Bald Cypress
Issue Date: 1/30/2023
Drawn By: WR/SE/KR

A1.1



ROOF PLAN

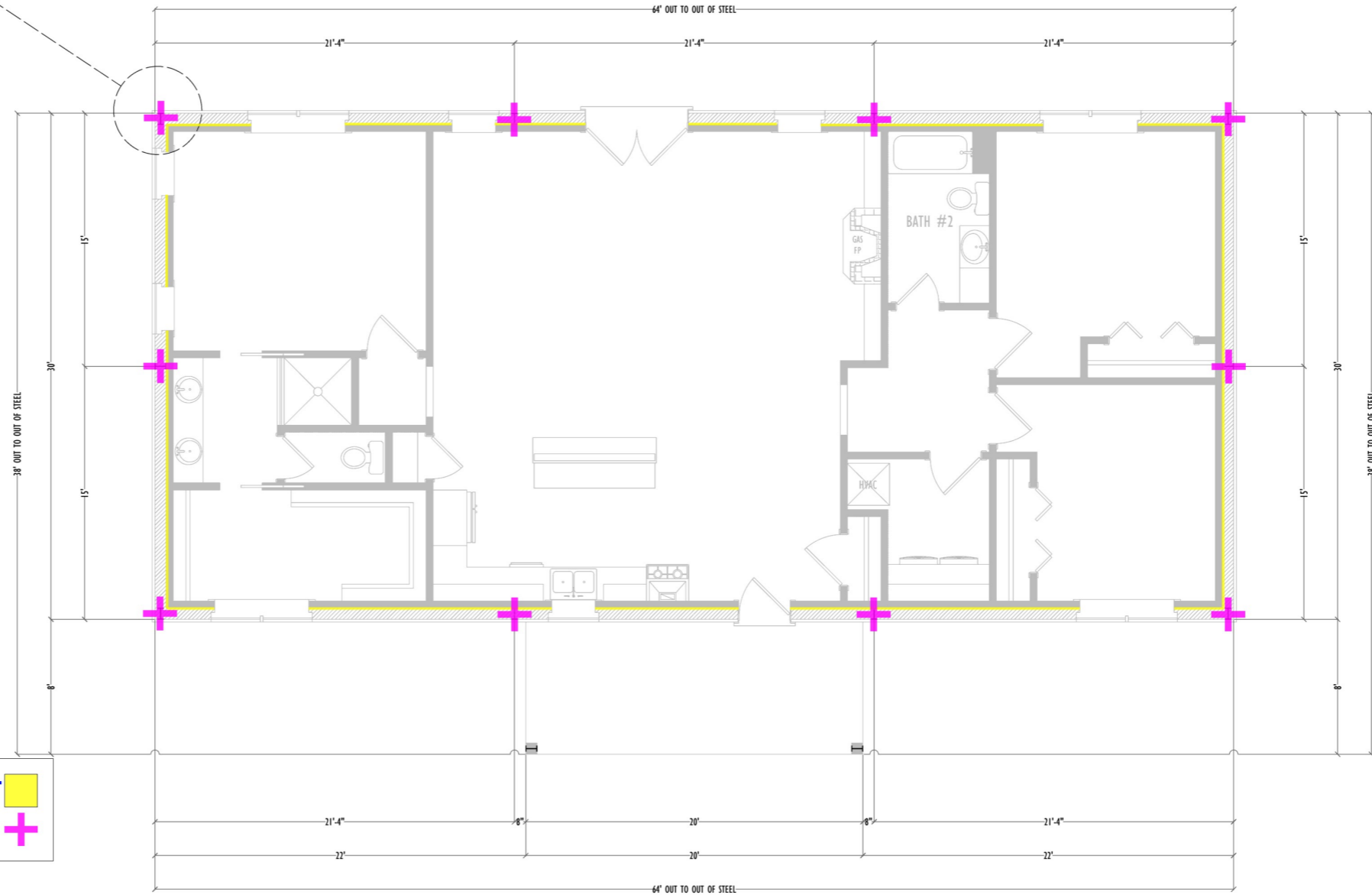
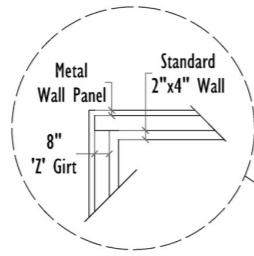
SCALE: 1/4" = 1'-0"





	Ridge Flashing	85.0 FT	
	Valley Flashing	38.0 FT	
	Metal Roofing	2,633.0 SQ FT	
	2x Roof Rafter	2,355.0 SQ FT	
	Standard Joist	2,048.0 FT	
	Roof Perlin	2,352.3 SQ FT	
	Standard Joist	654.0 FT	

ROOF PLAN

Project ID: Bald Cypress
Issue Date: 9/1/30/2023
Drawn By: WR/SE/KR

A1.2



 (8") Z Girt (11'-0" H)	138.4 FT 
 PEB Column	10.0 

METAL BUILDING LAYOUT PLAN

SCALE: 1/4" = 1'-0"

METAL BUILDING LAYOUT PLAN

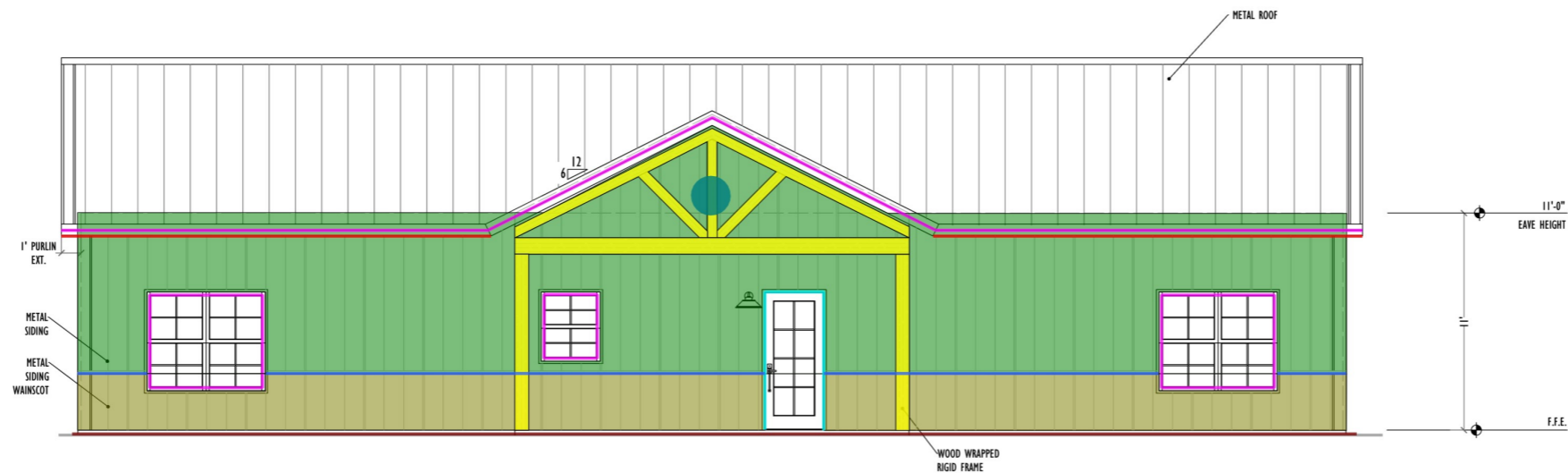
Project ID: Bald Cypress
Issue Date: 1/30/2023
Drawn By: WR/SE/KR



BACK ELEVATION

SCALE: 1/4" = 1'-0"

	Window Trim	124.2 FT	
	Door Trims	37.0 FT	
	Weep Screed	130.1 FT	
	Metal Siding	918.6 SQ FT	
	Metal Siding Wainscot	316.8 SQ FT	
	Wainscot Trim	89.7 FT	
	Fascia	134.8 FT	
	Decorative Paint @ Column & Beam	94.6 SQ FT	
	Aluminum Gutter	109.6 FT	
	20'x5'-6" Bracket	1.0	

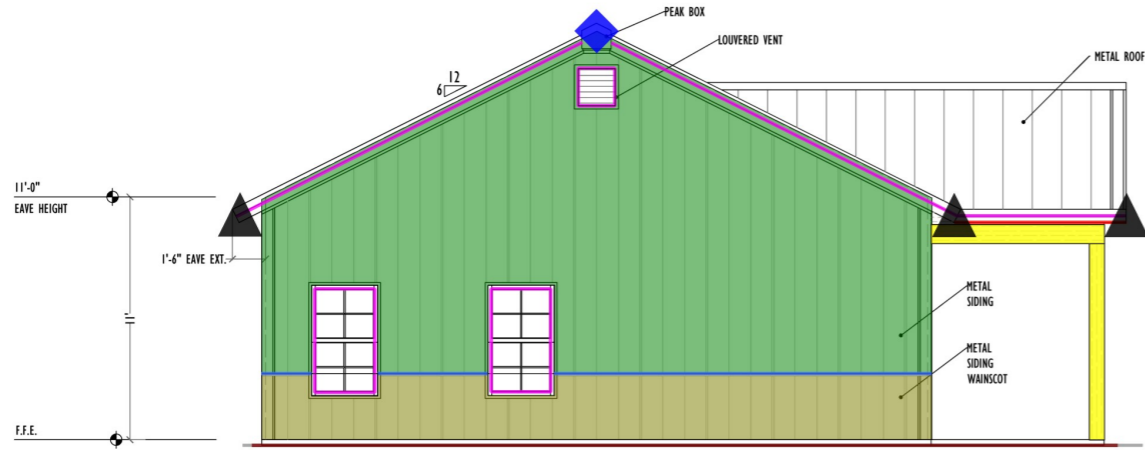


FRONT ELEVATION

SCALE: 1/4" = 1'-0"

FRONT AND REAR ELEVATIONS

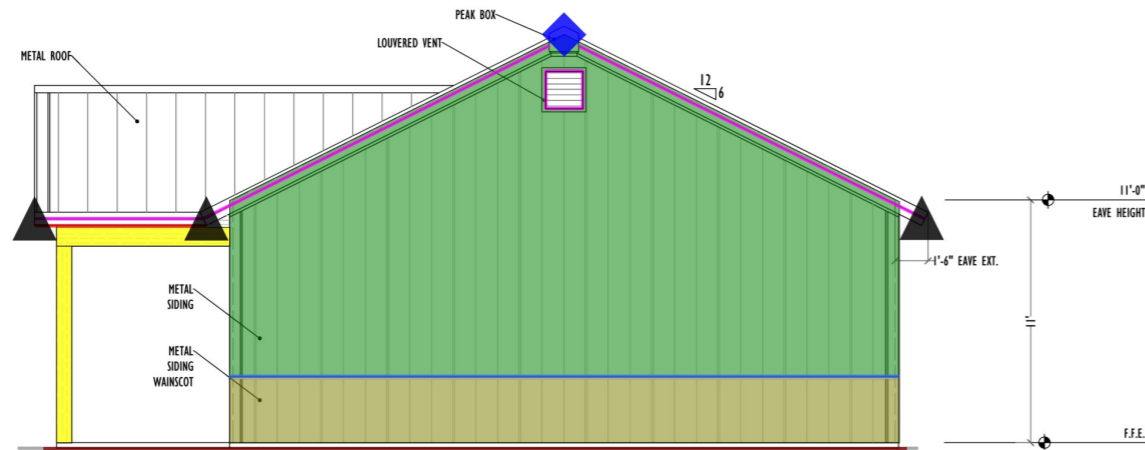
Project ID: Bald Cypress
Issue Date: 1/30/2023
Drawn By: WR/SE/KR



LEFT ELEVATION

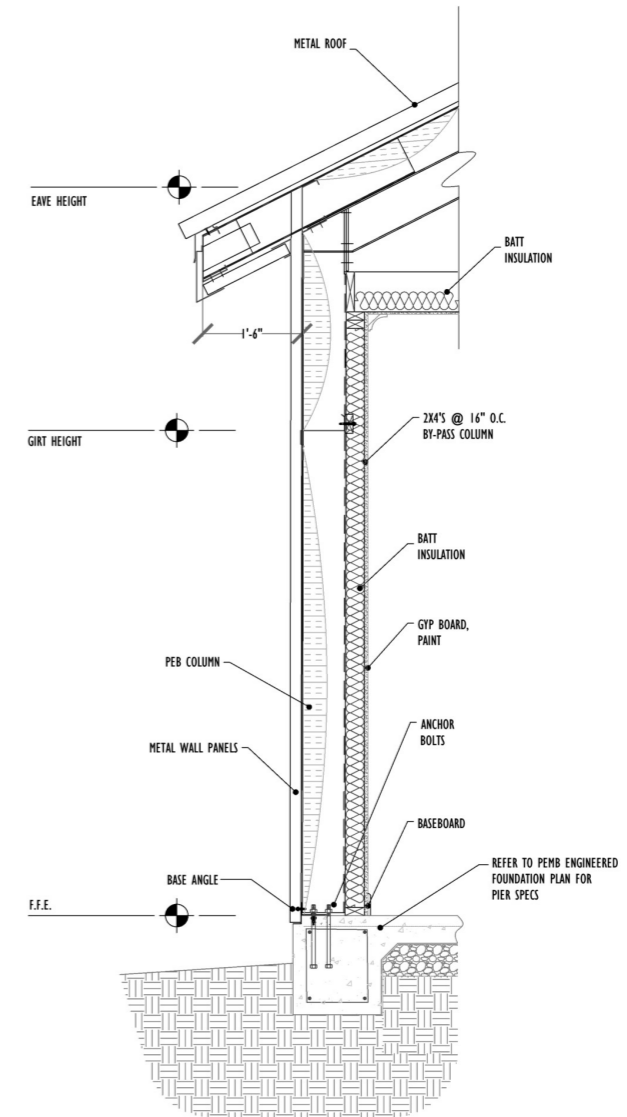
SCALE: 1/4" = 1'-0"

Window Trim	43.0 FT	
Weep Screed	78.4 FT	
Metal Siding	682.9 SQ FT	
Metal Siding Wainscot	175.9 SQ FT	
Wainscot Trim	54.7 FT	
Fascia	85.5 FT	
Decorative Paint @ Column & Be...	51.8 SQ FT	
Aluminum Gutter	15.6 FT	
Downspouts (11'-0" Long)	6.0	
Peak Box	2.0	



RIGHT ELEVATION

SCALE: 1/4" = 1'-0"



1 WALL SECTION
A2.2 SCALE: 3/4" = 1'-0"

REFER TO PEMB ENGINEERED FOUNDATION PLAN FOR PEMB SPECS